

Inside this Issue

- 1** President's Corner – A monthly look ahead from our President Cathryn
- 2** Calendar of Events – A look ahead to the upcoming events
- 3** Message from the President Elect – A note from Lily
- 4** Membership Update – Please help update our member records
- 5** 4th of July Safety – A message from the Safety Committee
- 5** 2005 – 2006 Board and Committee Chairman

Visit us on the web!
www.naiw.org – our national page
www.cacouncilnaiw.com – our state page
www.insurancewomenla.org – our local page
www.inssfa.org – our national education foundation page

Insurance Women of Los Angeles
 P.O. Box 481294
 Los Angeles, CA 90048
 Victoria Lovinggood, Editor



IWLA Cover Note

President's Corner

Cathryn Feely
 President



Dear Members and Friends of IWLA:

This is my first President's Report in our Cover Note. I want to start by thanking IWLA for placing their trust in me to lead them during the 2005 – 2006 term. As stated in my acceptance speech at our annual Installation Banquet on May 17, our theme this year is Fellowship & Trust.

Fellowship & Trust were 2 key ingredients at Edward Lloyd's Coffee House, opened in 1688, which became the birthplace of Lloyd's of London. Those same 2 components are essential in our relationships with clients, colleagues and our association.

Fellowship is even defined in NAIW Creed: **"In maintaining a spirit of goodwill among our members, we can promote cordial relations within our association. By cultivating fellowship within the insurance community, we can exchange ideas and create a healthy working environment."**

IWLA is one of the founding member associations of NAIW. It

has always helped its members grow both professionally and personally. We have accomplished many successful projects throughout the community over the years. We will continue to develop and enhance our activities because part of our purpose is to provide an environment in which to build and enhance business alliances.

Some of our new members have already demonstrated Trust & Fellowship. They are enthusiastic, armed with new ideas and have shown a commitment to our goals. Together, with our dedicated veteran members, I believe our combined talents will help us reinforce Fellowship & Trust through networking opportunities, closer involvement with our sister associations, guests, potential members and old friends.

I look forward to working with all of our members during the coming year. Together we can achieve Fellowship & Trust in all that we do.

In Fellowship,

Cathryn Feely
 IWLA President 2005 - 2006

Happy Fourth of July
 from IWLA



THANK YOU TO THE 2004 – 2005 IWLA BOARD
AND COMMITTEE CHAIRMAN

EXECUTIVE BOARD

President: Susan Fife, CPCU, CPIW, AIM,
AAM, DAE, AIS
President Elect: Cathryn Feely
Vice-President: Lily Gastelum, CISR
Secretary: Darlene "Chris" Lipka
Treasurer: Deborah Paladino, CIC, CPIW
Covernote Editor: Margie Scott
Immediate Past President: Marci Barrett
Directors: Marion Graham
Vicki Huff
Rhea Meshekow
Mitula Patel

COMMITTEE CHAIRMAN

Advertising: Lily Gastelum, CISR
Arrangements: Cynthia Andrachick, CPIW
Audit: Susan Fife, CPIW, CPCU, AAM, AIS,
AIM, DAE
Budget: Deborah Paladino, CIC, CPIW
Bylaws: Lily Gastelum, CISR
Community Action: Marci Barrett
Education: Victoria Lovinggood
Finance: Marion Graham
Jobline: Margie Scott
Legislation: Mitula Patel
Membership: Vicki Huff
Programs: Gail McKenzie
Public Relations: Cathryn Feely
Safety: Nancy Burgos
Website: Mitula Patel
Secret Pal: Marci Barrett



Calendar of Events



Friday, July 1, 2005

MEMBERSHIP DUES ARE DUE TO NATIONAL
NAIW
2006 National Convention "Call for Programs" due

Monday, July 4, 2005

NAIW National Closed

Saturday, July 9, 2005

10:00 A.M., Mitula Patel's House
Transfer of Records & Potluck
6312 Jackie Ave, Woodland Hills, CA
(818) 347-6041

Saturday, July 16, 2005

9:00 A.M., Long Beach Marriott
Leadership Training Workshop
4700 Airport Plaza Dr, Long Beach, CA

Wednesday, July 20, 2005

5:30 P.M., Beverly Garland Hotel
Dinner Meeting (Please contact Cynthia
Andrachick at (818) 464-9365 for information)
4222 Vineland Ave, North Hollywood, CA

Friday, July 22, 2005

Inroads e-mailed

Monday, August 1, 2005

DUES NOT RECEIVED ARE DELINQUENT

Wednesday, August 17, 2005

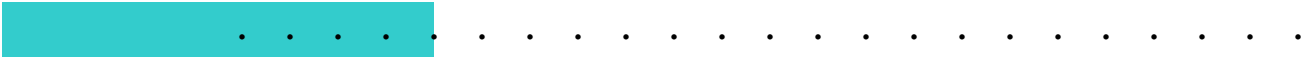
5:30 P.M., Beverly Garland Hotel
Dinner Meeting
4222 Vineland Ave., North Hollywood, CA

Thursday, August 25, 2005

Inroads e-mailed

Wednesday, August 31, 2005

MEMBERSHIP DROPPED FOR MEMBERS WITH
UNPAID DUES AFTER 4:30 P.M. CST
The *NAIW Connections* mailed to all members



Message from the President Elect

Lily Gastelum, CISR
President Elect

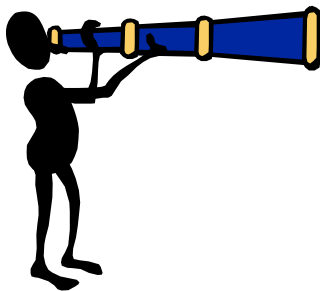
It was a wonderful banquet. It was so good to have such a turnout this year. The past couple of years Deborah and I have always been worried that we would not meet our minimum- this year we exceeded!

As your incoming President Elect, I will try my best to assist Cathryn by having our meetings run effectively, orderly and timely. We all need to remember that we are all volunteers and most of us are new to our positions and we need patience while we work out the kinks. We have a great reference source from the seasoned members and they are always there to help.

One item I would like to bring up. It has been rumored that some members might be moving on to other organizations. We need to look at this as a positive move, just like with a job sometimes people feel the need to move on. Remember the words from our *Collect*, "Keep us free from pettiness and unwise discrimination." All organizations need support from one another at some time and we need to keep our doors open. Let me get off my soap-box and say that I look forward to a year of learning. Just like with our CWC class we should dive in and take a chance at something new and different. IWLA has continued to challenge me by making me a more independent and confident woman. Thank you all for your past and present support.

Respectfully submitted,

Lily Gastelum, CISR
Incoming President Elect



Collect for Insurance Women

Marie K. Franzen
Ins. Women of Milwaukee

Take us, O God, under Thy Divine protection.

Make us to act as Thy messengers for peace and contentment, for harmony and understanding.

Grant that we may see more clearly the point of view of other men and women in all lines of insurance.

Realizing the highly competitive nature of our business, teach us to respect competition at all times.

Keep us free from pettiness and unwise discrimination. Let us do our work willingly, honestly and thoroughly, giving service graciously at all times.

Teach us, O Lord, to know and to realize that by Thy grace we can live in perfect peace with one another.

And grant that through this organization we may become closer in friendship and understanding.

AMEN.

Job Line



Please check our web-site for updated information at www.insurancewomenla.org or contact Victoria Lovinggood.

Membership Update
Brought to you by the Membership Committee



Please help the Membership Committee update its records by filling out the form below and returning to Marilyn Cartrett, Membership Committee Chairman or Victoria Lovinggood.

Name: _____

Home Address: _____

Home Phone Number: _____

Home Fax Number: _____

Cell Phone Number: _____

Home E-mail: _____

Company Name: _____

Work Address: _____

Work Phone Number: _____

Work Fax Number: _____

Work Cell Phone Number: _____

Work E-mail: _____

Do you prefer to be contacted at: Home _____ or Work _____

Date of birth (mm/dd): _____

List designations held: _____

Year you joined NAIW: _____



WELCOME TO THE 2005 – 2006 IWLA BOARD
AND COMMITTEE CHAIRMAN

EXECUTIVE BOARD

President: Cathryn Feely
President Elect: Lily Gastelum, CISR
Vice-President: Mitula Patel
Secretary: Gail McKenzie
Treasurer: Deborah Paladino, CIC, CPIW
Covernote Editor: Victoria Lovinggood
Immediate Past President: Susan Fife, CPIW,
CPCU, AAM, AIS, AIM, DAE
Directors: Cynthia Andrachick, CPIW
Vicki Huff
Darlene "Chris" Lipka
Margie Scott

COMMITTEE CHAIRMAN

Advertising: Gail McKenzie
Arrangements: Cynthia Andrachick, CPIW
Audit: Susan Fife, CPIW, CPCU, AAM, AIS,
AIM, DAE
Budget: Deborah Paladino, CIC, CPIW
Bylaws: Mitula Patel
Community Action: Rhea Meshekow
Education: Andrea Gable-Setterstrom
Marion Graham
Finance: Christine Chandler-Tillett
Jobline: Victoria Lovinggood
Legislation: Marci Barrett
Membership: Marilyn Cartrett
Programs: Darlene "Chris" Lipka
Margie Scott
Public Relations: Lily Gastelum, CISR
Safety: Margie Scott
Website: Mitula Patel
Secret Pal: Vickie Huff



July 4th Safety Tips

Margie Scott
Safety Committee Chairman

Fireworks Safety Tips



Fireworks and celebrations go together, especially during the Fourth of July. But fireworks can be dangerous, causing serious burn and eye injuries. That's why the U.S. Consumer Product Safety Commission and its national and state partners strongly recommend:

LEAVE THE FIREWORKS TO THE PROFESSIONALS!

But if fireworks are legal where you live and you decide to set them off on your own, be sure to follow these important safety tips:

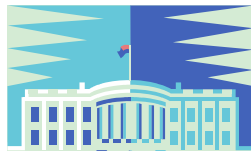
- ✦ Never allow children to play with or ignite fireworks.
- ✦ Read and follow all warnings and instructions.
- ✦ Be sure other people are out of range before lighting fireworks.
- ✦ Only light fireworks on a smooth, flat surface away from the house, dry leaves, and flammable materials.
- ✦ Never try to relight fireworks that have not fully functioned.
- ✦ Keep a bucket of water close in case of a malfunction or fire.

Member Updates

Member Updates is a column to spotlight the accomplishments of our members. If you have received a promotion or a new designation you wish to share, please contact editor Victoria Lovinggood so that your accomplishments can be included in the newsletter.

Congratulations!

Our very own Marci Barrett was selected as the Legislative liaison for the California Council of NAIW.



I Need Your Support

Dear Friends & Family,

As you may know, I have accepted the challenge and I am participating in the Avon Walk for Breast Cancer on September 17 & 18.

Did you know that every three minutes, another woman in the United States is diagnosed with breast cancer? I didn't, and I was shocked to learn how prevalent this horrible disease has become in this country.



I am eager to get started with my fundraising and I need your support! I have pledged to raise money for the Avon Walk for Breast Cancer as part of my participation in the walk. Your contribution will help to support medical research into the possible causes of and cure for breast cancer, education and early detection programs, and clinical care and support services for women with breast cancer in communities across the country. There is a special focus on helping medically underserved women, the poor, minorities, the elderly, or those with inadequate health insurance. And much of the money granted by the Foundation goes back to the communities where it was raised, supporting everything from local grassroots programs to national organizations.

It is faster and easier than ever to support this great cause – you can make a donation online by simply going to [Avon Walk for Breast Cancer](http://www.avonwalk.org/site/TR?px=1822910&fl=en_US&s_tafID=1232&pg=personal&fr_id=1132) (http://www.avonwalk.org/site/TR?px=1822910&fl=en_US&s_tafID=1232&pg=personal&fr_id=1132). Whatever you can give will help! I truly appreciate your support and will keep you posted on my progress.

Thank you for your support; you really do make a difference.

Christine Chandler-Tillett



How do you want to receive your newsletter? Please use the survey below and return to Victoria Lovinggood, editor. Be sure to include either your e-mail address or your mailing address. Thank you.

IWLA CoverNote Survey



Your Name _____

How do you wish to receive your CoverNote?

Mail _____ E-mail/Web _____